

House

- Pack plans
- Pack pottery
- Pack coins
- Pack plates
- Sort + pack photographs
- Photographs plan Bath E
- Pack notebooks.

Notebook:

- Enter catalogued objects D-H 200-217
- " " " " " D-H 161
- " " " " " Cemetery dig
- " " " " " Coins of above

Digs in notebooks:

- 13-R -
- Spina -
- Theatre -
- D-H 200-217
- Cemetery -
- Bank mosaic

- Seminis +
- Survey of all ancient monuments + photographs
- Measurements
- Walls
- Continue survey - organize them.

- Photographs: general of D-H 200-217 with walls in. Saturday
- General of D-H 200-217 with walls removed. Sunday
- Photographs note seconds = 4 July
- Photographs 13 R = 5 July

Small of Greek language

N 1 wall 3 = 3 panels in brick.
 indistinct - some glass - standing
 in spring of front land - picking
 as found.
 Givaha = for appetite
 Tot - duck
 Hormad - like
 fibr - mud brick

5.30 A.M.
30 workmen

area
section

- I Start - time - so men
- II in Khan located
- III Khan quadrated
- IV Area started L10!
- V Pulling down vaults under our supervision
- VI Fragment of half col. applied - measurements reference to sandy card.

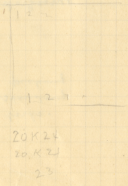
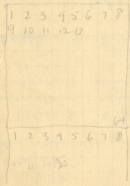


Sq. 11 in K24

near SE of intersection of
y+225.600
x-268.500

Saru Mahmud dig

Square 23 in K23.



Friday, 8 June, 1934

The mosaic crew which had cleared a few panels of mosaic pavements in this building turned the clearing of a larger area over to Reis Mahmud.

The stone fence over the first panel was removed & the earth cleared away bringing to light the S border of the Europa panel & two other panels: Thetis & Oceanus; and a female head in a megalion. The room in which these pavements were found was labelled Room 1.

Dug along the wall of heavy masonry which the mosaic crew had found E of the Eros & Psyche panel (Room 3).

Extended dig to south.

Shards from 7 Junes east of late drains over Room 4:

Late B: stamped cross, Lond: 3579-P345

Archi. tc leaf: 3580-A30

Late C

Shards from along East wall (limestone)

Late Hell = small fish plate shape: 3576-P342

Thin red dishes: Perg & local

Early Roman moulded bowl: Perg, local

Vitreous green.

Other red sherds no later than I cent. A.D.

Frag. early Roman moulded bowl. 3578-P344

Perg or local bowl 3577-P343

Friday, 8 June, 1934.

This excavation was developed after the mosaic crew had uncovered a few fine panels.

Removed stone fence over S. end of Room 1 revealing Oceanus, Thalesse, & medallion with female head.

Dug along wall of heavy limestone masonry E. of Room 3.

Extended dig to S. of stone fence in level area 217.

Shards: Along E. side of E. wall - level of mosaics.

Basket 1. = Stamped amphora handles:

3584 - P349 & 3585 - P350; Hell. unguentaria;

Hell. moulded; Hellenistic black glaze;

Hell. black glaze with metallic sheen (III - II B.C.)

Late Hell. shapes in red glazed; Late A.

Fish plates = black 3582 - P347 & 3583 - P348.

Saturday, 9 June, 1934

Dug along E. wall of heavy limestone masonry to earlier wall beneath it.

Uncovered a well (Well 1) + E. end of Rooms 4 + 5 + late wall over W. end of Room 5.

Sherds from surface over S. wall of Room 5.

Basket 1 = Late Hell.; Local or Pergamene; vitreous green; lamp sherd of later I. A. D. (3590 - L199).

Sherds from surface N. of modern stone fence = perhaps dump from plundering.

Basket 2 = Late Hell.; Perg.; Local red early; Hell. Lamp sherd I. B. C.; Late A.; Glass neck 3591 - G67; Glass with blue dots 3592 - G68; Frag. of late relief 3593 - S28.

Monday, 11 June, 1934

Cleared along S. wall & cleared W. ends
of Rooms 4 & 2. Found well (Well 2).
Started to dig in surface over Room 8.
Cleaned along E. wall.

Shards

Basket 1 from along foundations of East Wall.
Hellenistic = one IV or III B.C.; most I-I B.C.
Clear glass - high foot; frag. of Hell. lamp.
Hell. saucer: 3598 - P355.
Hell. red-glazed small fish plate 3599 - P356.
High foot of greenish glass: 3600 - G65.

Basket 2: surface over APOC panel.
Late Hellenistic
Pergamene & local red glazed.

Basket 3: From Well 1.
Blue & white glass top.
Late B & local red glazed.

Tuesday, 12 June, 1934

Cleared mosaic pavement of Rooms 7 and
Room 8 (AIPOE).

Cleaned along S. wall of Room 5.

Sherds from along S. wall of Room 5.

Hellenistic fish plate - black glaze.

Pergamene; local red glazed ware.

Vitreous green glaze.

Lamp sherd - probably I A.D.

Sherds from over AIPOC panel.

Local red glazed ware.

Pergamene

Late A.

Monday, 11 June, 1934

Cleared along S. wall & cleared W. ends
of Rooms 4 & 2. Found well (Well 2).
Started to dig in surface over Room 8.
Cleaned along E. wall.

Shards

Basket 1 from along foundations of East Wall.
Hellenistic = one IV or III B.C.; most I-I B.C.
Clear glass - high foot; frag. of Hell. amp.
Hell. saucer: 3598 - P355.
Hell. red-gazed small fish plate 3599 - P356
High foot of greenish glass: 3600 - G65.

Basket 2: surface over AFPOC panel.
Late Hellenistic
Pergamon & local red gazed.

Basket 3: From Well 1.
Blue & white glass top.
Late B & local red gazed.

Wednesday, 13 June, 1934

Cleared surface debris over Room 6 & found that early mosaic pavement of this room has a late wall + geometric mosaic over it.

Shards from Well 2

Stamped amphora handle: 3606 - P 360

Pergamene; local red glazed.

marble revetment.

Base Roman clear glass

Late Hell. type lamp with pierced handle.

Thursday, 14 June, 1934
Cementing + cleaning mosaic pavements;
clearing Wells 1 + 2.

Shards from Well 1.
Late Hell. black glaze
Pyramone

Saturday, 16 June, 1934

Extended dig to N. of Room 7 + found
some late walls + apparently a well head.

Monday, 18 June, 1954.

Extended excavation to N of rooms 6, 7,
& 8 & uncovered a well (no. 3) with a
mosaic pavement, consisting of panels with
a bird in each, around it.

Shards from Well 1.

Late Hellenistic - ca I B.C. - I A.D.

Parthian

Local red glazed ware

Glass

Shards from surface near Well 3

Unknown red glazed (rather heavy &
course) with rouletting on exterior side

Late C

Revetment clump

Shards from Well 3 - basket 2

Byzantine lamp sherd. 3620 - L 201

Late B rim

Tuesday, 19 June, 1934

Completed excavation of walls N. of rooms with fine mosaic pavements & stopped excavating further horizontally until after the mosaic pavements are raised. The ones were shifted to the Theatre to finish there. In meantime mosaics glued & made ready to raise.

Well 2 - Basket 1.

Sherd late Hellenistic type lamp
Pieces of lead
Roman clear glass.

Shards from along E wall Basket 2.

Sherd of moulded bowl
Late Hellenistic lamp sherds
Local red glazed ware
Pergamene

Shards from Well 1

Coarse ware water jug with vertical ribbing
Pergamene & local red glazed ware
Thin, brittle coarse ware
Hell. lamp sherds
Painted coarse ware
Black glazed ware
Unguentarium = 3624 - P364
Amphora handle = 3623 - P363
mouth of oenochoe = 3625 - P365
terra-cotta Road = 3625 - T126
Also small altar = 3627 - A32

Wednesday, 20 June, 1934 to
Saturday, 23 June, 1934

Continued to clean wells with few men.

Sherds 20 June, 1934 from bottom of
Well 1. = (B1)

11 knucklebones

Bottom of black plate = 3633-P367

Local red glazed = 3634-P368

Unguentarium

Moulded bowl stud = 3632-P366.

Sherds 22 June, 1934 from Well 3.

On step inside well = complete lamp.

Waage, 13, type 8T - ∇ A.D. 3635-L204

Sherds 23 June, 1934 from Well 2

Pergamene

Local red ware

Fine reddish coarse ware

From Well 3.

neck of cloudy glass ware

Local red ware

Few sherds Pergamene.

Monday, 25 June, 1934

Raised mosaic pavements of Room 1,
and from beneath them got sherds from
both sealed & unsealed strata: sealed where
panels had not been destroyed & unsealed where
had been broken.

Immediately under the mosaic was a bedding
of decomposed sandstone; 0.25 m. thick
& below that a fill of brown gravelly earth
in which were sherds & fragments of painted
plaster - not true fresco.

Sherds from under pavement of Room 1

unguentaria; red glazed vertical ribbing
I. A. D.; thin coarse ware with rough glaze;
Pergamene; local red; black glaze with white
clay; black glaze on red clay (Attic?); glass;
Black glaze with scratched floral dec.; Hell. ustace
brown glaze; coarse ware; Hell. lamp handles.

Cat: Hell. lamp 3662-4208; Head of
lamp discus 3664-4209; coarse ware
3665-P379. Bronze pin 3666-4258

Tuesday, 26 June, 1934.

Excavated under Mosaic level of Room 1 and removed Mosaic pavement of Room 3.

Under the south wall of mosaic building Room 1 is a wall of field stones in sand. This is so poorly constructed it can hardly be called a wall at all: it is simply a trench into which field stones & sandy earth were thrown. It may have served as a foundation of S. wall of Room 1 except that another wall of same character runs E-W across the center of Sub 1.

Running E-W along N. wall of sub 1 is a drain: .325 joint to joint & joints plastered with fine hard white lime; inside dia. ca. 12 m.; sbs. .02 from center of groove to center of groove; sbs. flat & wide; grooves not deep & early type of ribbed drain. → W.

Fill sub 1: all same character - gravelly, dry, brown.



Fig. 1

Fig. 1 = Walls of field stones & sand = sub 1.

Fig. 2

Fig. 2 = Drain, sub 1.

Tuesday, 26 June, 1934.



Basket with tag in
place where bronze
statuette of Apollo was
found - sub Room 1.
→ E. Catalogue 3669-S133
Under Road of Oceanus.



Mosaic pavement of
Room 3 in process of
raising.

Tuesday, 26 June 1934



Mosaic crew
Central panel of Room B
just before raising.
= Eros. Psyche panel.

Shards: Sub. Room 1.

Coarse pottery cover = 3675 - P380

" " " = 3676 - P381

J.C. female head = 3670 - T131

Other objects from Sub Room 1

Yellow glass bead = 3671 - G73

Bronze ring = 3672 - U 260

Bronze awl = 3673 - U 261

Stone button = 3674 - S 134

Shards from Well 3 (v other objects)

Late A; revetment hook; Hall type lamp sherds,
local red ware; fine black glazed ware.

Unguentarium.

Tuesday, 26 June, 1936

Shards from Sub Room 1: under broken section of mosaic pavement & hence not sealed.

piece of millefiori glass

base of glass cup or bowl: 3683-474

Stamped tile 3684-7132

Shards from Sub Room 1 in late afternoon from stratum of brown soil & pebbles.

Hellenistic type moulded lamp: 3677-4210

Hellenistic black glaze ware

Pergamene plain

Pergamene stamped: XAPIC: 3679-P383

" " " : MHC: 3680-P384

" " " palmette: 3678-P382.

Hellenistic moulded ware

Moulded glass

Coarse ware: pots; urns; bases

" " with thin unpolished glaze

Shards from Sub Room 1 along N. wall.

Hellenistic moulded bowl.

" " lamps

Pergamene: stamped decoration: 3681-P385

Roman type I A.D. lamp 3682-4211

Pergamene plain ware.

Shards from Sub Room 3 - just under Mosaics

Bronze pin 3685-U262

Hellenistic brown glaze ware

Pergamene Ware

local red ware

Roman red glazed ware 3686-P386 with

vertical ribbing - ibid.

Hellenistic type lamp.

Wednesday, 27 June, 1934

Sherds & objects from Sub Room 1 in
stratum just above old quarry.

Stamped amphora handle. 3688-P387

Hellenistic black glazed; Hell. brown 3701-P394

Brown glazed relief: 3699-P392

Pergamene - plain & rouletted

Italian stamped A.TITI 3700-P393.

Local red: 3702-P395

Vitreous green glaze 3689-P388

joins with piece from sub 4; 30/6/34

Iron nail: 3692-U263, 3693-U264

Coarse ware, thin black glaze, rim & handle.

" " pot. 3690-P389.

" " " painted handle; neck: 3691-P390

Unguentarium

Moulded glass: 3694-G75; 3695-G76; 3696-G77.

Roman red - vertical ribbing.

Hellenistic terra nigra - black glaze.

Handle wine cup. Hell. red, brown 3698.

Hell. relief red. P391

Hellenistic brown glaze lomp 3697-L212 wheelmade

" moulded lomp 3705-L213 brown glaze

" " " 3706-L214 frag

" " " 3707-L215 "

" " " 3708-L216 bottom

" " " 3709-L217 frag.

" " " 3710-L218 "

Terracotta torso female N. of cross wall -

3687-T133

" horses head 3703-T134

" plaque 3704-T135.

Wednesday, 27 June, 1934

Sherds & objects from sub Room 2. in A.M.

In
B18
Large lamp handle: 3711-L219
Hellenistic moulded lamp 3712-L220
Glassware - 3713-G78
Pergamene
Hellenistic black & brown glazed ware
Coarse ware - thin glaze
Micaceous wine jar
Red glazed, vertical ribbed ware.
Coarse ware - cooking pots.

Sherds from Sub Room 3 in P.M.

In
B19
Hell. moulded lamps 3715-15, L221 & 2.
" multiple lamp 3716-L223.
Rhodian amphora handles:
ΔΑΛΙΟΥ - ΘΕΥΔΑΙ 3718-P397
ΑΓΡΙΑΝΙΟΥ 3717-P396
Hell. loom weight 3719-T136
Terra nigra black glaze
Hell. moulded ware, acanthus 3720-P398
Italian 3721-P399 a, b
Hell. black & red glaze:
3726-P404 miniature vase
3726-P405; 3728-P406; 3729-P407
Hell. wine cups: 3722-P400; 3723-P401
Pergamene plain
Red glazed stamped: XAPIC 3724-P402
Local red - 3725-P403
Urgentaria
Roman red with vertical ribbing.
Roman vitreous green glazed.
Micaceous wine jar - pieces (2) join with
sherds from Well 3.
Coarse thin black glaze & cooking.
Glassware: 3730-G79; 3731-G80
Bronze handle: 3732-U265
6 stone buttons.

Thursday, 28 June, 1934.

Raised mosaic pavements of Rooms 6, 7, 44.

Excavated under pavements of these Rooms—
i.e. Sub 6, sub 7, sub 4 & also continued
excavating under Room 3 in sub 3.

Cleared sub 3 down to cuttings in rock
of hillside which go with earliest building.



Excavation of sub 3. → N

B 20
Sherds from Sub 3 - A.M. A
Hell. moulded lamps 3737
Hell. black glazed bowl P408
" black moulded ware P411
" red.
" wine cups 3738-
P409
Amphora handle 3739-P410
Vitreous green glaze
unguentarium; glassware
coarse ware

Sherds from Sub 4 in A.M.

Stamped amphora handles

TA ---- YE 3741 - P412

ΔΙΟΓΕΝ... , ΑΡΤΑΜΙ (ΤΙΟΥ) 3742 - P413.

Hell. moulded lamp.

Roman " "

Sherds from Sub 4 in P.M.

Hell. moulded lamp

" black glaze

Perg. plain

Perg. stamped A... 90Y 3743 - P414

local red ware; coarse ware, thin glaze

Glass bead. 3746 - G81

Bone ring: 3745 - B79

Stone button: 3747 - S136

T-C figurine of Persian: 3744 - T137

Friday, 29 June, 1934

Glued the pavement of Room 8 and excavated down to the Hellenistic level in rooms 4, 6, 7. From the strata beneath the pavements were many sherds of Pergamene ware and moulded bowls.



Sub
Excavation of Room 4
→ E



Fig. 1. Sub.

Fig. 1. Excavation of room 6-7 → W. Room 8 mosaic glued.



Fig. 2.

Fig. 2. Vertical tile drain under duction well between rooms 6 + 7.

Saturday, 30 June, 1934

Excavated beneath the mosaic pavements of
Rooms 2 & 4.

Sunday, 1 July, 1934

Formed mosaic pavement of Room 8 and
spent rest of day transporting mosaics to
workshop in Antioch.

Monday, 2 July, 1934

Raised mosaic pavement of Room 8 ;
excavated under Room 2 to stercorarium - continued
tranch to area around well 2.

Tuesday, 3 July, 1934

Excavated beneath mosaic pavement of Room 8 & dug along S. wall of Room 5 down to stero. Glued mosaic pavements of Room 5.

Wednesday, 4 July, 1934

Began to raise pavement of Room 5.
Dated deposit of pottery from Well 3.

Thursday, 5 July, 1934

Completed raising mosaics of Room 5 & began to excavate beneath it. Found underground aqueduct connecting Wells 2 & 3, & another one connecting Wells 1 & 2.

Friday, 6 July, 1934

Continued to excavate beneath Room 5.

Saturday, 7 July, 1934

Completed excavation of sub Room 5 down to stero (bed rock).

Sunday, 8 July, 1934

Wells of field stone & dirt put on plan & recorded.

Monday, 9 July, 1934

Began to clear away walls of field stone.

Tuesday, 10 July, 1934.

Completed clearing walls away revealing early quarry. For cuttings in this of plan + photographs.

Mosaics in Room 1

General arrangement:

The entrance to the room is on the south side. Around the room is a border of tesserae in plain colors with red rosettes, and at the entrance are brightly colored birds. Then a red border, within which are yellow lozenges outlined in white, divides the pavement into panels. Along the south or entrance side is a square panel with a head in an inscribed medallion. ^{in each corner} Between these square panels in the center opposite the entrance is an oblong panel with two busts: Thetys & Poseidon. These panels are oriented to the south toward the entrance. In the center of the room is a large square emblem of Europa & the Bull around which is an elaborate border. On the ^{remaining} three sides of this central panel (the 4th side is the Thetys & Poseidon panel) are oblong panels with geometric designs, and the two square panels of the remaining corners have geometric designs also. The center panel is oriented to the north, in the opposite direction from the entrance panels.

Description:

Outer border = very light red & yellow, and white with small red rosettes arranged in squares with a rosette in the center of each square. On entrance side the field is of light yellow except for 8 rows of white tesserae along the red border which divides the pavement into panels. Against this light yellow background in the center of the south side under the oblong panel with Thetys & Poseidon were three birds. One of these has been destroyed; one is partly preserved, and the other is well preserved. The partly preserved bird is the central one of the group; it is a peacock rendered in glass tesserae of light green, green, dark green; light blue, dark blue, grey-blue; black, yellow; and orange. There are also a few

Tesserae of limestone: light violet, grey;
The other bird is standing on a fallen spray of
a branch with a green-blue stem, grey & green-blue
leaves & a red bud or cherry at the end.

The bird has legs & claws of dark red glass
tesserae; the ^{neck} body & tail is predominately green
with many glass tesserae of various shades of green,
high lights of grey limestone, & shadows of blue glass.
The bill is of orange ^{glass} tesserae with dark red glass
tesserae in the shadow. There are rings of dark
blue & dark red tesserae around the neck. The
wing is outlined with black limestone cubes with
white limestone for high lights, light red limestone
for half values & dark red glass in the shadow.

Antial panel of the Entrance = Thalassa & Poseidon
Thalassa = left side of head & face destroyed.

Head & neck in limestone tesserae white & very
light red with grey shadows. Black eyes, black
hair parted in the middle with strands of seaweed
hanging down over shoulder & also strands of
black hair. From forehead is an antenna
of light & dark green glass tesserae, dark blue
& black glass tesserae & a few of grey-blue.

Behind her left shoulder is the fore part &
head of a sea serpent with triangular
fins along its back done in dark red glass tesserae
with half values of light red limestone, and high
lights of orange glass tesserae. The body is done with
on dark blue glass tesserae in the shadows grading
to dark green, green, light green & grey. The
head has green & black antennae; there are
high lights of grey & light red on the cheeks; the
eye is black in an orange & red pupil; the mouth
is of dark blue & dark grey & it is open
displaying a red roof & an orange fang.

Poseidon: Perfect preservation. Head modelled
with great variety of colored tesserae - mostly
limestone giving the impression of a large, shaggy
colorful head. In the rendering of the features there
is a high light of white on the forehead and the nose.

There are shadows of light grey & grey in the features and tesserae of light red & light yellow to give tones to the flesh. The eyes are accentuated by an arch of red glass cubes around the upper part of the eye ball and around the left eye, conceived of as partly in shadow, are tesserae of black; the pupils are also of black glass with a fleck of orange glass in the left one. The lips are red and over & around the mouth & down over the chin flows a beard done with tesserae of grey, light violet, dark green & black limestone. The neck & chest are of grey with very light red & light grey in the light. The hair which hangs down over the shoulders is dark grey, black, & dark green. Over the forehead are crab claws of dark red glass tesserae, tipped in the high light with orange & light red glass. Over his left shoulder is a madder of light yellow with two rows of light grey tesserae down the center = limestone.

Female Head in SE corner

This head is placed in a medallion formed by two rows of dark red limestone tesserae. This is inscribed in a square also formed by two rows of dark red limestone tesserae which is within a square of white tesserae whose outer limits are formed by the border which divides the room into panels. In the angles formed by the medallion inscribed in the square are light yellow limestone tesserae.

Within the medallion is a circular border of white limestone tesserae.

The bust in the medallion is in full view with the head turned slightly to the right. The features are modelled with high lights of white, light red, and grey. The pupils of the eyes are of red glass cubes; there is a high light of yellow limestone tesserae under the nose; and the lips are of light & dark red limestone.

The hair is black with a dark grey high light

Room 1.

over the forehead & strands of yellow & red down the right side of the face & over the right shoulder, and red strands on the left side of the head & left shoulder. The neck is very light red & light gray & around it is a necklace of yellow & red glass cubes with short pendants of orange glass tesserae. The shoulders are of light red & over the left shoulder is a drapery light gray in the high light, gray in half light & dark gray in shadow. Behind her head is a round mass modelled in light gray, gray & dark gray & outlined in black; around this is an irregularly circular mass in white, yellow & dark yellow - this may represent drapery or a stylized cliff.

Head in SW corner: almost completely destroyed. Borders are same as for SE corner. Top of headress: yellow at top, high light of chrome yellow glass; then red with high light of grey blue down to destroyed part.

Oblong geometric panel at W. side of Europa panel: Geometric design based on squares & intersecting circles in red, black, yellow & white.

Oblong geometric panel at E. side of Europa panel: Large lozenge inscribed in an oblong & ornamented with lozenges & the fret rendered in isometric perspective. The triangles in the corner of the oblong are of red & have a white floral decoration. Colors in large lozenge = red, light red; yellow; grey; blue grey & white; black.

Square geometric panel at NW corner of room: Design of small lozenges, triangles, & squares in black, white, yellow, red, grey, dark red.

Oblong panel at North end of room:

Another geometric design of squares, triangles, oblongs, lozenges in black, white, red, dark red, yellow, grey. One of preserved oblongs ornamented with gulloche; one of preserved squares with gorgon's knot.

Square panel at NE corner of room:

Intersecting octagons with squares in center. Yellow + red, light red octagons ^{in black + white borders} over which are intersecting octagons defined by white + grey tesserae. In center of each octagon is a white square with red inner border within which is white oblong rendered in perspective with red dot in end against black background.

Emblems in center = Europa on the bull

1. Border.

Outlined by a single row of black + one of dark green.

Then there is a cornice moulding of yellow with horizontal bands of a single row of dark yellow + tesserae in shadow which become red in high light. This cornice is rendered en ressaut with two projections on each side of the square emblem, + each projection supports a female mask. The projections are supported by brackets of black outlined in white in the high light. Under the brackets are rows of black, grey, light blue, blue, green + dark green glass + tesserae.

The masks, of which five are preserved, show a little variety in the rendering of the features + the coloring.

The west mask on the south side has grey and red hair crowned by white appears to be a jewelled diadem of blue, light + dark blue glass; + yellow + yellow green glass + dark green glass. Features are modelled in flesh tints with shadows of grey + high lights of white. Eyebrows are grey, eye-lids red, right pupil of eye red + left black, yellow at tip of nose, lips dark red + light red.

The east mask on the south side has same type hair + color with diadem or knot of hair on top

Room 1.

over forehead of blue, dark blue & light blue glass, with 3 tesserae of orange glass and four of red in knot.

On hair is also strand of yellow-green. Features same South mask, east side - features same, hair same - no knot of hair or diadem.

North mask, east side destroyed.

South mask, west side - hair has appearance of being bobbed with strand coming down back.

Hair colored dark, slightly greenish grey, dark bluish grey with few red & black glass tesserae & row of light blue tesserae above hair over forehead. Features same.

North mask, west side - Hair colored grey, light yellow & white. Diadem or knot destroyed - few glass tesserae of green & light blue glass.

Between the masks on the south side is a garland of flowers; foliage is colored white, light grey, dark grey, all greens (glass) & light yellow; flowers orange, red & light red - glass except light red. The garlands are tied, ^{by ribbons} in bows to the projecting ^{cornice} above the masks. The ribbons are of white, light blue & dark glass & strands of them wave over the garlands, ribbons & masks against a black background.

In the SE corner other strands of the ribbon with which the garland is tied & sprays of leaves come from the sides of the end masks to the angle. The ribbons are of white limestone & light blue & light green glass & the sprays are of the same colors with a few orange & red glass tesserae.

In the angle of the corner is a bird of blue, dark blue, light blue glass plumage & white wing which holds one end of the ribbon in a red beak. One leg of the bird is of orange glass & the other of red glass; it stands on an egg of concentric rings of light yellow, dark blue, white tesserae with a center of dark red & orange glass tesserae.

Between the masks of the E side is a garland like on the S side except that the lower strands of the ribbons on each side are of white & orange & red glass.

Border of Emblena - continued.

In the S.W. corner the end ribbon of the south side is of white & blue (glass) tesserae & the spray is of white & blue leaves with branches of yellow, light yellow & red between the leaves of the spray. The end ribbon of the W side is red & grey against the black background & gray-blue against the yellow cornice moulding. The spray is of the same color as above mentioned spray. In the angle is a bright green bird (glass) with an orange bill & orange legs - this part damaged & can't tell what bird stands on.

The garland between the masks on the W side is of the same colors as others; has rice flower of various shades of red in full view. Ribbon is red, & yellow (white in light & tied in blue & white bow on S side). Garland to N destroyed - except small section: green & white leaves; blue & white leaves, some stems of dark blue, light yellow, dark red.

Over the masks & the frieze of garlands is the crowning cornice moulding, in recess, to correspond with the projections of the lower moulding. The whole border may be called an attempt to render an entablature (or, at least, the frieze of an entablature) in recess.

The upper cornice is also against a black background and between projections over the masks as a ribbon of red, white & yellow.

The upper cornice has dentils rendered in white at end, yellow for under side, & red or black for spaces between them. Above the dentils is a row of yellow tesserae & then a row of red which become black in shadow. The top two rows of tesserae of the cornice are white in the light & yellow in the shadow. The angles at the preserved corners are black & the underside of the projections, above the masks, are dark red.

Within this elaborate border are two rows of red tesserae & two rows of white - then the background of the emblena proper.

Emblems of Europe on Bull

Background is light blue grey limestone,

Wind blown veil is yellow with lights of white

• light yellow + shadow of grey.

Headress of dark red, green-yellow, red. Black pupils,
red lips.

Body modelled in flesh tints with white high lights.

Girdle(?) of yellow. Sealed on black robe.

Bull = brown, red.

Mosaics in Room 2.

This pavement was very near the surface and consequently badly damaged.

The emblem which is the chief feature of the decoration is at the S. end of the room & is oriented to the N.

Start at N. end of Room & go S.

At N. end of Room is a plain white border extending the width of the room.

Then to S. is a narrow white border between double rows of black tesserae & in center of this is a row of small lozenges with black borders & centers & gray, white, light yellow in field.

- ① Then to S. there is a large rectangular panel with a white border all around & a red border of red with white lozenges on three sides (E, S, W.). In this rectangular panel are a series of squares with wide yellow borders outlined in black. In these yellow borders, between the corners of each square they define, is a small white square with red border & red decoration in center. In the large white squares are lozenges with different colored borders, fields, & centers; almost all have red border, then light red, white, black center; some grey & white.

From the S. of this rectangular panel on to the S. end of the room the panels are defined by the red border with white lozenges set off by a narrow white border on each side of it.

A row of oblong panels thus defined is along the E. side of the room; they are badly damaged. They are oriented to the W. - i. e. to the center of the room. The first one preserved - reading from N. to S.

- ② is yellow oblong with black border in which is white lozenge with black border, in which is sq.

- ③ The next panel to S is yellow oblong with black border & in yellow field is multicolored parrot with red beak & red legs on grey spray.

- ④ Next panel = yellow oblong with black border - destroyed

- ⑤ Next panel " " " " " in which is multicolored peacock on grey spray.

The W. series of panels to correspond with these are destroyed - if they existed at all.

Mosaics in Room 2.

Between the S. end of the large geometric panel ① and the emblem are two oblong panels which make up the width of the emblem:

- ⑥ The panel to E. is a yellow square with black border in corners of which is small lozenge of black with white center. Inscribed in this square is a black lozenge, a white lozenge, a red lozenge, & then yellow field with bird of multicolored plumage - mostly destroyed.

The panel to W. mostly destroyed, preserved portion of it is exactly like ⑥.

Rhythmic Fading Pegasus (Septis Magna)

Emblem: Helrades & Horse of the Sun

Fine, simple foliate border. Three leaves, upper part of which are light yellow with white lights & lower part dark yellow & gray, spring from central cluster of white, light red, dark red.

Starting point is corners; where border meets in center, is small oval of light yellow, dark yellow, black, light blue glass. Inner border = 3 rows.

Female figure to spectators left wears over drapery of many colors: over left arm it falls in rows of black, d. blue glass, green, light red & orange-red; same colors where it is gathered in knot around thigh except some glass tesserae of orange-red are added. The over-drape ends below the knees where the skirt continues down to fall over the insteps in folds of black, white, gray, blue-gray & grey-green; the border at the bottom of the skirt is light yellow & light red. The feet are foreshadowed into arcs of yellow, light yellow, white light & black shadow. Tunic is white with border around neck of yellow & green.

Head badly damaged - flesh very light red with white high light & grey shadow in features. Wears red band with light blue glass sprays projecting from it. Left arm extended to neck of horse is gray, white in light & light violet in shadow - yellow bracelet at wrist. Right arm pointing to horse same colors & also yellow bracelet at wrist & dark red between fingers. (Compare with Statue of Athena, March for Zeus effect).

Mosaics in Room 2.

The head & back of the horse, which stands in the center between the two female figures, are destroyed. The upper part of the horse is done against a grey background, the lower part against a white background. The chest of the horse is light violet-grey, white in light & grey-green in shadow; it is outlined with a single row of black tesserae along which are dark green tesserae. Around the horse's neck is a necklace of orange glass.

Forelegs & hoofs are violet & violet-grey with grey & white lights & dark violet & dark grey-green shadows.

The horse stands in grass of dark blue glass, clear glass, & grey-green limestone - many glass tesserae have been disintegrated.

The female figure to the spectators right wears an over-drape which blows in an arc behind her; the predominant colors are yellow & light yellow with white lights & shadows of dark grey - there are a few rows of light red.

The tunic is of grey with white opaque glass for high lights & dark green for shadow.

Face destroyed - few orange glass tesserae on neck.

Wears diadem of red from which are sprays of dark & light blue glass.

Arms modelled in very light red with white light & very light violet shadow.

Holds before her toward horse part of her over-drape (black outlines, yellow, light yellow, light red, grey-green) in which is apparently an offering of food - foliate sprays of green glass, dark blue glass, white opaque glass, clear glass & fruit of orange glass & red glass.

Shirt falls in folds over feet in same manner as in left figure: black, green, grey, white, violet-grey.

Skirt = arcs of light & dark red tesserae.

Notes on landscape

Foreground light - of white tesserae - may represent river because done in wave-like undulations

Female figures stand on grey & grey-green ground line. Between them are two bunches of grey &

grey-green grass growing out of black base line against white & light grey field. Above this = another line of grass in which horse is standing. Hence this part of background done in registers almost like vertical projection.

To right side of figure on right is a representation of ground in grey & dark grey which goes back to an irregular horizon line & the sky is represented in very light blue-grey tesserae in which a large cloud is outlined by darker blue-grey tesserae.

To the left side of the figure on the left is a rock or hillock of grey-violet tesserae & behind the left shoulder is a hill (?) of light grey with a tree (?) of dark grey to grey on the side of it.

Note the perspective used - spectator seems to be below female figures looking up at them as though they were on a stage.

Note also position of figures: lower part frontal; upper part turned sideways to center.

Magnific. & grace of posture & very decorative color.

Construction of mosaic in room 2 at center of E side emblem:



Tesserae

Matrix: hard mixture fine sand; lime which is also in small lumps thruout mixture; very little pounded dark yellow tile, but not enough of it to color matrix

Cement of coarse sand; few flecks pounded dark yellow tile; down into interstices of stone bedding

Bedding of stones.

Stones on rimmed earth = gravelly brown

1. Mosaic Pavement of Room 3.

General arrangement & description

Along the south wall in which was the entrance from the hall (Room 4) is a border ornamented with alternate squares and lozenges. These divisions are made by two rows of red tesserae. The first of the panels thus defined (reading from W. to E.) is white square with a black circle inscribed in it; inscribed in the black circle is a yellow square; in which is a white lozenge; in which is a red lozenge as center of the design.

The next panel is an oblong of white tesserae in which is a yellow lozenge with a bird of black hair & wing feathers; blue & light blue belly, neck & head in glass tesserae; dark red spot on back of neck - glancing at red insect.

The next panel is a yellow square with white circle inscribed in which is mask of female with yellow hair with spots of blue (rubbed) - features impressionistically rendered in light colors of red, grey, yellow & white.

The next panel is an oblong of white in which is a yellow lozenge, in which is a bird of multicolored plumage - grey, dark & light blue glass; red glass; (red glass ring around neck & beak), yellow-green glass; yellow glass; dark & light green glass; black glass. Standing on spray of grey with blue leaves, & light red, green & grey flower.

The next panel is a yellow square in which is white circle with demaged male mask of red-brown hair in which is green glass garland - features predominately light red with grey shadows.

The next panel is a white oblong with yellow lozenge in it & in yellow lozenge is a peacock of round multicolor plumage all of which are glass in this case - stands on spray of grey-green with dark red glass bud with green, light blue & blue-green glass leaves.

The next panel is a square of yellow with inscribed circle of white in which is fine female mask. Black glass hair with garland of light & dark blue wavy leaves. Black eyebrows - eyelids dark red, pupils black, eye balls yellow, lips dark red - flesh = light red, light yellow & white.

The next panel is mostly destroyed = oblong white with yellow lozenges which probably contained a bird.

The corner square panel (SE) also destroyed = probably square panel with geometric decoration like SW corner.

The next series of panels across the entrance end (S) are picture panels of mythological subjects.

The first one to W is a square panel with an narrow outer border to two rows of red tesserae, then a yellow & black wave border, & finally an inner border of dark yellow. The figure represented is a Bacchante or hunter running with a lion on a leash which he holds in his left hand & in his upraised right hand he holds a slightly curved club with a small knob at the end. The background of the panel is of white limestone with cast shadows of grey - source of light in all panels is from west. Figure wears very short bill of white with bands (tesserae wide) of dark green & spots of dark red, black glass - shadow of grey-green. Over his shoulders are two animal pelts which fly behind him in the wind; they are knotted at the neck & color is grey with spots of dark red, black, blue, dark & light blue glass. Wears wreath of red band (black in shadow) glass & spiky leaves of blue & green glass. Body modelled in ruddy flesh tones. Club is dark grey with dark grey-green shadow. Lion's leash is light red-brown; lion dark yellow with high lights of white shading to light yellow.

The next panel is central panel of entrance & represents Sycurgus being strangled by the vine. Around the panel is 5 strand quoillocke of black, dark yellow, light yellow, white & grey. On each side of this is a double border of red & white.

In the center of the composition is Sycurgus with outspread arms which are entwined by tendrils of the grape vine, and around his neck is another tendril choking him. His left knee is on a rock or hellock against which his fallen double-bladed ax is leaning. At each side of him is a grape vine.

Color: Hellock in central foreground is grey on

Mosaic Pavement of Room 3.

lighted sides and yellow in shadow. Ax handle is yellow & black with dark blue glass blades & light blue glass edge. Foreground is grey.

Body of Tyargus in light red (ruddy flesh tones) with high lights of white & shadows of yellow. Features are impressionistically rendered in many colors - eyes black, hair black & black beard. Around waist is belt of dark grey-green, light blue glass, dark blue glass, light red glass, & red-brown. Over his left shoulder is grey drapery & behind him is drapery of black, dark blue glass, yellow, & light blue glass.

The limbs of the vine are yellow & dark & light yellow.

The tendrils of the vine are blue-green, grey-green, light red, & light yellow.

The leaves are shades of green.

The grapes are clusters of yellow, grey, light yellow, & red-violet flowers. Background white.

Daphne & Apollo Panel in SE corner. About 1/2 destroyed. Within border of 2 rows of red, then 1 row of white & finally black & yellow wave pattern like SW corner. On inside of this is 2 rows of grey & then background of white.

To spectators left is laurel tree with light yellow & dark yellow trunk, leaves done in green & light green glass, blue & light blue glass, & black, grey in shadow.

Daphne fleeing & falling to bent tree position with head turned back toward pursuing Apollo and her left arm extended toward him to repulse him. In her right hand is tambourine? & drapery falls from her waist over her bent knee & behind her.

Apollo rushes toward her with extended arms to grasp her - figure mainly destroyed.

Color: Body of Daphne in light red flesh tones which are almost white in high light - Features are white in light & grey in shadow. Wears sunshade of predominately green leaves (grey in light, black in shadow). Hair light red & grey. Tambourine is light & dark red.

Robe: black, 3 blues glass, grey, yellow glass,

Ground = grey.

Mosaics in Room 3

Central Panel = Emblem of Eros driving Psyche

Borders = Outer border of red & white wave, then yellow & white ivy leaf mosaic on black background. Then white & red wave motif. Then 2 rows of white, 2 rows of yellow, & 2 rows of white.

Emblem represents Eros driving 2 winged Psyche through the sky. The figure of Eros is very well done & the head is remarkably fine - may be a copy of an early type from a Hellenistic painting. The hair is red brown in light & violet in shadow. The features are white in high light, very light red in half light & grey in shadow. Lips red; pupil of right eye is red brown, of left eye black. Wings are yellow along upper edge, feathers are grey in light & dark yellow in shadow & black at the tips. Nude body is white in light, light red in half light, & grey in shadow.

Eros stands on an invisible car (or biga) the two poles of which come up behind the backs of the Psyche - they are yellow with a high light of light yellow & a shadow of light red-brown.

In each hand of Eros is a rein which appears to be fastened to the backs of the wings of the Psyche - the reins are of yellow & scarlet in light & yellow-grey in shadow.

The wings of the Psyche are the usual butterfly type of grey & scarlet with yellow ribs & eyelets of an outer circle of red, then yellow, & center of red. The two wings in shadow are dark green with grey added to the colors of the eyelets.

Around the shaded side of the bodies of the Psyche is a row of dark blue & black & scarlet (green). The Psyche to the spect. left black hair & to the right, red brown hair. The nude bodies are done in same colors as body of Eros.

Background is of alternate bands of light blue (green) and dark blue to black & scarlet. Probably represents sky because of flying figures & no horizon line.

Panels to W of central emblem

Geometric design of red lozenges with white background in which are smaller lozenges of black, iron dark yellow, light yellow, white & center of black.

To west of this is one oblong geometric panel of yellow isosoles triangles with red borders & black centers on each side of a row of white lozenges with red centers; then a small square panel of yellow outlined with a row of black with an inscribed white lozenge outlined in black; this lozenge contains a red square with a central lozenge of white.

Panel to E of central emblem

Same as panel to west.

Beyond this the geometric panels have been destroyed by late draw. One contained a central ornament of a knot (black, white, grey, yellow red & dark red) in a lozenge which was inscribed in a yellow oblong. Another was a white square with an inscribed yellow lozenge (black border) in which was a white circle.

Row of small panels to N of central emblem

This is a row of alternate square & oblong panels: the square panels contain masks & the oblong panels contain birds. All of these panels are defined by a white border.

The first panel (starting on W. side) is a yellow square in which is a white circle with a red lozenge border (2 rows) inscribed in it. This lozenge border contains a tragic mask: hair yellow with yellow-grey shadow & and rolled puff of hair, around face, which is bound by black net tied behind ear. Open mouth black, red lips, flesh very light red with white light-grey yellow shadow. Eyebrows grey, lids red, pupil black, eyeball white. Damaged.

Next panel is light yellow oblong in red border with inscribed lozenge of light red with dark red & then

Mosses in Room 3.

white border. In this lozenge is a yellow circle with a white & then black border. Against yellow field of circle is bird of multicolored plumage (red back, red legs) on spray - damaged.

Next is a square yellow panel with inscribed white circle which contains tragic mask: yellow hair, jewelled diadem (multicolored - many glass), features some color as mask in first panel.

Nest is an oblong panel of same design & colors as second panel described above - except bird of different species - stands on grey, light blue (glass) spray.

Testi more than half destroyed - design & colors same as first panel. Comic mask with large wide open mouth (black) with grey lips lined on inside with red. Socks of grey, black, grey-green at each side of face. Broad flat nose of red, yellow, light red. Black pupil in white eye-ball.

North of this row of panels is a narrow row of panels across the whole width of the room - On south side this row of panels has a border of a single row of red tesserae; on the north a double row of red tesserae. The panels are alternate oblongs of light red & light yellow. On two sides these colors are offset by single row of white.

Amazon shield panel. At the north end of the room is a large panel of red, yellow, white & grey.

Around Amazon shield panel on three sides (W-N-E) is a border of alternate square & oblong panels & then a plain white border to the wall. All red border.

The S. panel on W. side is grey with inscribed lozenge which has border of black, white, 2 rows red, grey & field of white in which is inscribed a grey circle with a black border in which is a yellow lozenge with a white border.

Mosaics in Room 3.

- ② The next border to the N is a grey square with inscribed dark grey lozenge with inscribed yellow square which has white border.

③ The next panel is a plain rectangle of grey - a clumsy left over to permit square panel at corner (NW).

- ④ The NW corner panel is a grey square with inscribed dark grey lozenge with inscribed series of concentric circles - white, red, yellow.

⑤ The next panel which is next to NW corner on N side is partly destroyed oblong of grey with inscribed lozenge with black border & white field in which is an angular petal design around a circular center.

- ⑥ The next panel to the E is a grey square with dark grey lozenge in which is white circle, then dark red circle, then red circle.

⑦ The next panel to the E is an oblong grey panel with same design & colors as first panel of series described.

⑧ The next panel is mostly destroyed but it was like panel 4 or 6.

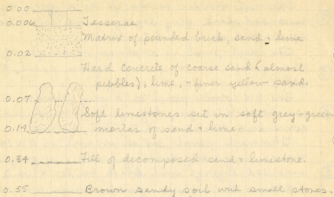
- ⑨ The next panel = grey rectangle or oblong with lozenge of white with black border. In the lozenge is an angular petal design (yellow with red border) around red central circle with white border; at outer angles between petals are small yellow lozenges with red borders. Same as 5.

⑩ The NE angle panel is oblong like panel 4 or 7.

⑪ The panel next to it on S is like panel 6.

Remaining panels destroyed by late drain.

8. Construction of Mosaic in Room 3.



Mosaics in Room 4

This room is a long hall paved with mosaics laid in panels of geometric design & three figure panels between a long geometric border. Runs E-W.

The border is of red lozenges & isosoles triangles with a yellow center in a black border.

Starting at the W. end is a figure panel most of which is destroyed. In the NE corner a small section of it is preserved: This represents a misshapen dwarf with an unusually long skull, large belly, & very large phallus who strides to the E with right hand on the end of the phallus & turns upper part of his body around to look and point with left arm to a larger figure following him. Above the head of the dwarf is the inscription in red tesserae: KAIEY = (KAIEY).

The dwarf has a long skull (light red with dark red, red, & grey) which is apparently close shaven; a projecting forehead immediately under which are deep set eyes; a sharp pointed nose, protruding black mustaches (or buck teeth?) & sharp-pointed chin (dark grey-green). Neck is violet grey, body & phallus light red in full value, grey in light & dark red & black in shadow. Behind him is a short black goat tail.

Only the advanced leg of figure following him is preserved = same colors as body of dwarf.

Around this panel was border of 2 rows of grey tesserae. Each panel set-off by wide white border.

The next panel to the E is an oblong panel of yellow ^(dark grey border) with inscribed white lozenge with outer border of dark grey & inner border of dark red. In this lozenge is a yellow circle with red border -

The next panel is a long rectangular one of geometric design with a grey & white border on the long sides, and a red and white one on the short sides. In inner geometric design consists of yellow hexagons whose alternate long rows have red & white & grey & white borders. (Start central row, red).

Mosaics in Room 4.

- ④ The next panel to the E is an oblong panel of grey with dark grey border & in it is a yellow lozenge with white border which has row dark grey on outside & row red on inside.

- ⑤ The next panel is a rectangular figure panel with a mythological or, most probably, obscene subject. On a bellowy foreground grey is a nude male figure in a contorted position with a nude female figure. The body of the male is rendered in light yellow with light red high lights & grey & dark grey shadows. He has long, shaggy hair (dark grey & black, white eye ball, black pupil, dark shadow of red along profile of nose & dark red lips, at his right side is a spray of grass(?) in black, grey, green, green, & grey.

The body of the woman is rendered indistinctly - probably because of the nature of the representation. Most of the tesserae are of white with modelling lines of light grey & some tones of light red on thigh & breasts. Head destroyed.

At the W. end of the panel is a tree in light grey tesserae with green leaves.

Background white - Border dark grey.

- ⑥ The next panel is a small oblong one exactly like panel 4 except that both rows of tesserae around border of central lozenge are red.

- ⑦ The next panel is a square one with lozenges & triangles of red, yellow & white.

- ⑧ The next panel is an oblong one exactly like panel 2.

- ⑨ The next panel is a square one with dark grey border containing intersecting circles with the resulting geometric figures colored white, dark grey, yellow, dark red. The dark grey units have a sq. decoration

3.

Mosaics in Room 4.

The red units have a white ^{rosette} decoration & the yellow & white units have a red decoration.

- (10) The next panel is exactly like panel 6.
- (11) The next panel is another panel of (probably) obscene nature. There is the same yellow foreground as in panel 5 - also colored grey; and to the W. is a grey tree with green leaves. Bodies of male & female colored as in panel 5.

Construction of mosaic in Room 4

0.00

0.01

0.02

0.06



Tesserae

Matrix of sand, lime, little powdered dark yellow brick. Frittle. White, slightly yellow.

Cement (frittle) grey & coarse sand, lime, little charcoal. This poured on rammed brown gravelly earth - ~~no stone bed~~

Mosaic Pavements in Room 5.

Starting from the East end the niches are numbered 1 to 5.

Niche 1: Eros light red body, white in light, red in shadow. Features: some except deep shadow as in grey. The grey's row of red to divide hair & lighted side of face; hair grey. Wings grey & blue-green-grey. Fish pole & line: grey. Fish on end of line: light blue-green on top, white belly outlined in light blue grey; black eye; red & light red gills with black gill fin. Rider dolphin with black back, blue-grey belly, red & light red mouth, dark red, red, & light red tail. Driver dolphin with red reins. Also is red & light red shrimp. Swimming into niche 1 from niche 2 is fish with red & light red top; grey top fins, white belly outlined in very light red; dark red & light red & black gills & grey gill fins.

Niche 2: Riding Eros same color - torch red & dark red, flame light red & grey. Dolphin same color. Fish below same color as fish caught by Eros in niche 1. Fish swimming into this niche from niche 3: grey back fins; black back with alternate red, light red & black, grey stripes. Gills red & black, gill fin grey-green. Belly white outlined in very light violet. Fish swimming from niche 2 into niche 3 is same color but larger & of different species.

Niche 3. Eros same except wings are black & red at top & more grey shadow used on side away from lantern. Dolphin same except tail light grey & grey. Lantern on arm (or basket?) black top & handle, dark grey, grey elsewhere. Fishpole same as niche one - line disappears into water. Large fish below has black back with grey top fins, blue grey & grey belly, bottom line & fins blue grey, gills red & yellow, gill fin yellow, yellow eye. Swimming into niche 4 from 3 is a long fish like a pike which has a brightly colored snake twisted around it - snake opening mouth at Eros. Fish: Black top & grey top fins; grey & blue grey belly red & yellow fins; light red eye; Snake: grey top, very light violet bottom, spots of red, black, light yellow, white

Mosaic Pavements in Room 5.

and light red in between.

Niche 4: Eros & Dolphin partly destroyed but same colors as in niche 1 - also pole line.

Small fish under mouth of Dolphin is grey with 1 line black & 1 line dark grey down the center; gill red & white.

Under Eros is fish with red back, top grey fins, yellow belly, light violet-grey bottom & bottom fins.

Under this is Portuguese man-of-war(?) with grey, light grey & white body & grey & light grey streamers. Behind these is fish of grey back & top fins, then red & light red belly with very light violet bottom; gill black & red, gill fin grey.

Niche 5

Swimming into niche 5 from niche 4 is long slender fish: black top; grey top fins; red & black gill with black gill fin; grey belly & middle. Eros, Dolphin & pole same as niche 1.

Underneath at left is short wide fish: red back with very light violet top fins; light red to light grey-red middle; red gill & gill fin; light yellow & grey eye with black pupil; red-grey bottom. Caught on Eros line is

Sole shaped fish: head grey on top; light red in center; back black with grey top line & fins; grey to light red to white middle, grey bottom line & fins, red & black gill & black gill fin.

At end is red & light red shrimp.

Tesserae to decimeter = 105

Mosaic of Room 6

Built over the early mosaic of this room was a late house wall of limestone rubble and field stones set in soft lime with much charcoal.

This late room had a mosaic pavement which was laid directly over the earlier mosaic pavement.

Late mosaic pavement: Geometric pattern of white squares outlined with black with light red square centers outlined with black.

All tesserae are of limestone - large a little over 0.015 square & 36 to average decimeter.

Construction of late mosaic:

0.00

0.014



Limestone tesserae 0.014 to 0.018 sq.

Matrix of fine white lime with little powdered brick & chert in consistency.

0.014

Hard concrete with lime & fine gravel levelled at top & goes down into undercracks between stone bedding.

0.14

Limestone chips set soft sandy & gravelly cement with little mortar.

0.20

0.23

Very hard packed yellow earth top of fine, early mosaic floor.

This late house wall & mosaic were removed & beneath them was the mosaic pavement of a long narrow room with an outer border of plain white mosaics with small geometric designs of red & black on it.

Within this border is an inner border of four rows of black limestone tesserae; then another white border of 8 rows of tesserae; then a red & white turret border; & finally a black border of 2 rows of black tesserae.

Within the black border in the center of the room is a large head of *Thalassa* emerging from the surface of the sea. The face is done in light red tesserae with white high lights & shadows

2. of grey & yellow-grey. The pupils of the eyes are black under light red eyelids & grey & blue-grey eyebrows.

There are wings (or antennae or crabs-claws) springing from her forehead; in the light they are yellow, and green & grey in shadow.

The hair has strands of yellow, grey-yellow, black, light violet & a few tesserae of red. It is parted in the middle & kinks down over the shoulders.

Cooled across the front of the neck of Thalassa is a sea serpent which faces her from in front of her right shoulder with wide open mouth & darting tongue. The body of the serpent is done in lines of green, grey, dark grey, red, light red, & black. The head has a shaggy canine appearance; l. ear grey yellow in light, black in shadow; r. ear grey in light green in shadow. Tufts of grey, dark grey, dark yellow, yellow project from jowls. Eye white with black eyebrows; Snout of light red.

Third Thalassa head found: Prost mosaic & her

This head is against a white background and all around it swim multicolored fish, snakes, shrimp, snail.

Under the head is a nude Eros fishing from the back of a dolphin. The Eros has red aureole around his yellow hair; yellow wings with green tip feathers & behind his nude body a red robe floats back in the breeze. His body is very light red with high lights of white. He straddles a dolphin with a black back & belly of varying shades of grey; the mouth & under fin near mouth are of red & around the eyeball of white with a black pupil is a green ring; The Eros holds a yellow pole & at the end of his grey fish-line is black & grey fish with a red diagonal band behind the bill.

1. Mosaic Pavement of Room 7

This is a complicated geometric pavement which is interesting to study & compare with geometric pavements of later periods.

Around the room is a white border with black rosettes, then a red border of 4 rows of tesserae; next a white border of 4 rows of tesserae & finally a black border of two rows of tesserae.

Within this is a complicated geometric pattern of squares, triangles, lozenges, oblongs, & stars formed of lozenges all defined by two rows of black tesserae. Pattern =

SE corner



SW corner

Ornamentation of squares down center from

N to S = Oblongs in isometric perspective; 2 with blue

1. sides = white end with red dot in center; 2 with red sides & white end with blue dot in center; against black field with white outer border.
2. Second square has rosette of red, white & yellow & white with light blue petals between red, white & yellow & white petals. Rosette is on black circle which is inscribed in red square with white border.
3. Third square is knot of two interlocking ovals made of 5 strands each: one oval black outside, grey & white; other oval black outside red & white.
4. Fourth square contains Medusa head against white background. Features mostly in white high light; vsh. of light red; shadow light yellow; tip of nose

Mosaic Pavement of Room 7.

light yellow; lower eyelid light red; upper eyelid violet; pupils red; eyeballs, white. Eyebrows - light grey green & grey. Light yellow band diagonally across forehead; yellow & red ribbons woven into light violet hair - Grey wings with green center & yellow at top, light violet at bottom grow from forehead. Below wings & all through hair are small grey-green & green snakes with black eye & light red mouths. Tied in bow under chin is cord of black & light grey.

5. The fifth square is exactly like third.

6. The sixth square is exactly like first.

Ornamentation of oblong panels around border.

The ornament in the small oblong panels at the short ends consists of a white field with yellow oblong in which is white lozenge with red circle.

Along long sides the two end oblongs on each side have white field with black oblong in which is 4 ply closed gunlocks - black, red, white.

Next to end oblongs at N end starting to S are red lozenge & triangles at each side on a black field with white border.

Next to S are 2 amazon shields on each oblong on each side: a white one on a red background & a yellow one on a black background.

Next are lozenge & triangle again & next to that are amazon shields.

The four small squares at the corners have a four point yellow star on a red background with w. border.

The lozenges around the central squares are white, then small black bordered square in which are tesserae of grey, white, black, yellow, red & light red.

In the arms of the stars are small yellow & black lozenges.

Tesserae per decimeter = 130.

1.
Mosaic Pavement of Room 8.

General Arrangement:

On the west side of the room is a border of white tesserae with rosettes of red, light red, white & black; this continues on the N & S south sides; on the east side there is a narrow white border.

At the west side of the room is a geometric ornament of amazon shields of red, yellow and white limestone tesserae on a black background.

Between this panel of geometric ornament and the emblem is a row of small square panels with an outer border of six rows of white limestone cubes. The two end panels are geometric designs, identical in color & pattern, based on intersecting semi-circles. Colors: red; yellow; white; black. Tesserae: limestone.

The rest of the square panels contain masks. The mask to the south is a comic mask with an inner square border of two rows of red tesserae which is within a larger border of oblong cubes in perspective (yellow on lighted side, grey yellow in shadow & white on end) against a black background. The mask has a wide open black mouth outlined in light red with white lips. The cheeks, nose, forehead are of yellow; eyes outlined in brown & light red; white eye balls; black pupils. Hair black in shadow & white in high light & blue-grey in half value. Eye brows black.

The mask in the center is a tragic mask with a jewelled diadem in tesserae of many colors - many glass: orange, blue, light green, yellow, light blue, red, dark red. At each side of the face are strands of blue grey & dark red (glass) hair. The face is in white limestone; black open mouth; light red, red lips; yellow at tip of nose which is light red in shadow; black pupils in red eye sockets with yellow light on eye brows. Mask is against a white background within border of guilloche (white, black, grey, yellow). Around this is a sunset border of red, white.

The third mask (one on N) is also a tragic mask of some general aspect and color as above, except that strands of hair are yellow (glass) & grey; light grey limestone. No deaden; hair in rolled band over forehead - yellow with high lights of light grey & shadows of dark grey. Same borders as first mask - i.e. south one.

Around the other three sides of the emblem is a red & white scroll or wave pattern in the center of which is a guilloche of yellow, white & black on a black background.

The above border runs around small oblong panels on these remaining 3 sides of the room (N-E-S). The small panels contain birds richly colored with blue, light blue, dark blue, dark & light red, green, dark & light green, orange, yellow green glass tesserae, & light red, white & grey limestone tesserae. The birds are within a white border, then a single row of red, & black tesserae. The background is of yellow limestone tesserae. These bird panels may mark entrances to the room.

The bird on the N. is a peacock which stands on a grey & grey-blue spray of pomegranate picking at a red pomegranate on the end.

The bird on the E. is of the parrot family & orange & red bill - red legs & picking at round yellow fruit with blue glass sprays & blue glass stem.

The bird on the S. seems to be of pigeon family. some multicolored plumage & also on blue glass spray

In NE corner is small square with black border & yellow field in which is inscribed black circle with grey border. In circle is grey & white 6 petal flower with red center. Other corner NW. mostly destroyed but probably same.

3. Mosaic Pavement of Room 8-

Embleme

Borders: white of 6 rows; then black of 2 rows.

Foreground = violet-grey; black; & grey.

Foot stool of OTWPA = white, light yellow shadow, ornament at end is red.

Leg of lectus at N. end is yellow; high light of light yellow; elements outlined in light violet-grey except on shaded N. side where black.

Leg of lectus at S. end yellow; white light; grey & dark grey in shadows & outlines except N. side where black. Top is red & light red except for yellow & grey circle around it.

Pillows on lectus are green glass. High lights white & grey have bands of yellow and light red at each end. Under pillow at S. end and over end of lectus is drapery of blue & green glass with exterior drapery folds in black with grey outline. Shadows of black, grey, & grey glass in drapery.

Small table in foreground: Lower half of legs are lion legs surmounted by lion heads = yellow with white high light & dark yellow shadow; ears, eyes & tip of lion's noses are red. Above legs & table top same yellow with white high light. Grey ring around table. On table & hanging over foreground side is garland, or necklace of red & orange glass & white limestone. Also on table are two cups, most probably glass cups: blue glass in value; white in light; dark blue glass in shadow. Cups are filled with violet (to light violet) wine.

Figure of OTWPA: white & very light red in features & nude part of body; pupils of eyes violet red in light red sockets; light yellow at tip of nose; face & body light grey in shadow. Hair violet-red & violet with yellow drab which has green glass leaves at each end. Around neck is necklace of green glass, red glass, orange glass, yellow-green glass & black stone. Kind of ATPOS on her right shoulder is light & dark red. OTWPA folds in drapery in lap front of yellow, light red, blue glass, & green glass. Her drapery is yellow; white in light, dark grey in

Mosaic Paucos of Room 8

shadow & has narrow black band around edge. Under her is green & blue glass, drapery of lectus cover which has shadows of black & grey.

Figure of ATPOC. Body & face in light red with white light & light violet-red; shadows violet & grey. Hair of light violet; diadem of orange glass, red glass, very light violet stone with green & blue glass leaves at end. Necklace of dark blue & light blue glass, red glass, green glass, black stone. Over his left arm & shoulder is white drapery with grey lines & violet-blue shadows. Holds in left hand a yellow cup with red-violet wine in it.

Figure of OVAL. Body in white with grey shadows. Features destroyed but wears green & blue glass leaves on bald pate. Beard grey & dark grey with light of light red & yellow. Wears short drapery around thighs - light violet red trimmed with orange & red glass, light is white. In right hand extends yellow cup of wine toward ATPOC's around wrist is violet bracelet. In left hand holds yellow & black staff with light violet & light yellow violet bow.

Stands beside large yellow krater which is white in light, dark yellow to violet-grey in shadow. Around krater is wreath of green glass, blue, light blue glass, red glass. Krater full of violet red wine which is black & grey in shadow & light violet in light.

Poles of tent are in black & grey. Cross beam of grey & dark grey. Awning is violet which is white in light & dark grey in shadow.

Inscription in red - cf. colored tracing for reproduction.

Background of figures white except behind ATPOC = grey

Background above cross beam of tent = light blue-grey.

Tesserae per decimeter in white background of emblem = 153

border = 113

1. Construction of Walls.

Almost all of the walls have been plundered for building materials.

Room 1. Small sections of rubble wall set in hard grey mortar = well set rubble like well laid polygonal masonry = S. wall.

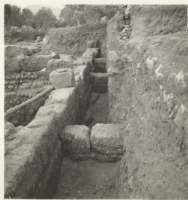
Room 2. No walls left.

Room 3. N, S, W. walls gone but foundations consisted of field stones and limestone rubble thrown into a trench with dirt.

East wall = large limestone blocks set dry without clamps. Quality of joining lost by disintegration. Stones .57 x .42 x .53 to 1.10 x .42 x .53.

N wall + S wall continue beyond E wall in same type of construction - i.e. heavy limestone blocks but do not seem to belong to mosaic building.

Room 4. W. wall = same rubble construction as S. wall of Room 1. N wall = same as S. wall of Room 1. E. wall = same heavy limestone wall as E wall of Room 3.



East wall of Heavy
Limestone masonry.
Forms east wall of Room
4, 3 + 6.

Construction of Rooms.

Room 5: West + south walls are exterior walls and constructed of triangular bricks made by quartering bricks marked thus:

Clay of bricks coarse + gummy + poorly baked + rather soft + friable.

Set in course sand + lime.

Vertical joints ca. .01; horizontal joints: 0.005 to 0.01

Between niches of 5. wall is rubble fill in cement of coarse sand + lime.

North wall was of brick + very thin wall (if plan) + constructed of triangular bricks in sandy mortar:



Inside (S) of this wall was plastered over with fine cement + join between floor + wall plastered with cement so that room would hold water:



Drain along south wall of Room 5.

Note large hole in

top of tile to right +

smaller holes in

tops of other tiles.

Tiles: .32 m. joint

to joint. Interior

diameter .11 m.

Joints cemented

with hard white

lime.



3. Construction of walls.

The above are the only walls of the mosaic building preserved.

Under the mosaic floors are a series of walls of small field stones + dirt. These are most probably foundations of masonry walls of a building just preceding the mosaic walls. Some of these foundation walls are directly beneath the walls of the rooms of the mosaic building - others have no relation to them (cf. plan). Hence in replanning of mosaic building some of earlier rooms (+ probably walls) were reused.

Under these field stone and dirt walls is a stratum of brown gravelly soil down to bed rock.



Stratum of brown soil between foundation wall of field stone + bed rock. Cross wall (E-W) under mosaic of Room 1.



Walls & quarry cuttings in bed rock under Room 5
looking toward well head of Well 2 in background



Looking S. to early &
original well head of
Well 1.

4.
Area north of Rooms 6, 7, 8

This area was only partly excavated during the spring campaign of 1934 + will be expanded during 1935. These notes cover only the walls + floors in danger of being destroyed during the winter of 1934-1935.

Back walls N. of Rooms 6-7: the thin wall N. to wall 1. longitudinal axis of Room 6 is of triangular brick set in concrete + of same dimension + construction as S wall of Room 5. The N. face of the wall has a coat of plaster .01 m. thick.

At right angles to this wall opposite the W. end of Room 6 is a wider brick wall which is built against above wall at a later period + does not bond with it. The wall is 0.84 m. wide + constructed of bricks 0.48 to 0.50 m. square + 0.035 m. thick.

Wall 2. These are set in hard white concrete with joints smoothed; horizontal joints from 0.35 to .04 m. thick; vertical joints + close - not stressed by smoking. The wall rests on a wall of rubble + at this point is a set-off of 0.06 m.

Wall 3. At right angles to wall 2 + parallel to wall 1 is brick wall of same construction but laid against wall 2 + not bonding with it. This wall also rests on a rubble wall + where they meet there is a set-off of 0.23 m. on S. face. This wall is very short + is continued at south end by late wall of field stones in pebbly concrete.

Wall 4. Between this wall + geometric mosaic is a late brick wall of which the complete dimensions are not preserved + only two courses of bricks preserved. It is set on dirt fill. Bricks: 28 x 44 + .041 joints .04.

Mosaic floor E of Wall 3. Wide exterior band is of yellow with single row of black rosettes widely spaced. Central geometric panel has black border of 3 rows of tesserae, then white border of 12 to 13 rows of white tesserae. Two geometric panels at each end of larger central panel have yellow field with black border. Within these oblong panels are inscribed a lozenge a white with black borders. Inside lozenge is white circle with black border.

Central geometric square has black border & yellow field. In four corners of square are black amazon shields. Incribed in square is lozenge with black & white border & black field; inscribed in this black field is yellow circle; inscribed in yellow circle is a square with black & white border & black field; inscribed in this black field is a yellow circle with a small black center. Around N-E-S sides of this pavement is a thin wall of rectangular bricks in concrete like S. wall of Room 5, but not well preserved. Over east end of mosaic is late wall & continuation of wall 2.

On N & E of mosaic are late walls of brick & concrete which must be further excavated. N. of mosaic this may be stair way foundation.

In debris is capital of a late period - ca 5-6 century. (for continuation of description cf. 1935).



Capital of late period in debris to N. of Room 6, 7.

North of Well 3 in the plain white
mosaic which surround the well were
several panels with birds & peacocks
standing on a spray.

These were raised and under them
was a lead pipe which cannot be traced
until the rest of the mosaic is raised.



Panel B in Room 9.

Excavation of Room 9
at the site of the Temple of
Bel at Palmyra, Syria.

Lead pipe
under mosaics
in Room 9.



Byehes

East wall described.

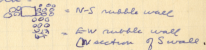
South wall.

E section was limestone blocks as shown by 1 in site & this went to beginning of rubble section at W. end. These limestone walls also probably continued in 2 N-S walls N with ~~the~~ East wall.

Hence seems that at place where limestone walls join rubble is SW corner of limestone bldg. since outlinings of 2 N-S walls do not go beyond S limestone wall but rubble wall beyond (i.e. W) does go on to S in S wall of trench.

Rubble section of S wall goes to rubble N-S wall but does not bond - contemporary though.

At corner is limestone block =



West wall is of rubble. with an occasional limestone block. Runs beyond both S & N walls of trenches.

W is series of spur walls of storage rooms or shops containing dolhas, oil press

All interior walls = limestone

East wall not uncovered

Well 1 goes with limestone house

All on quarry for albug limestone blocks.

Roll 2

1-2	R-13	general	28/6	16-10
3	D-H 200	Drains S. 5	"	11-10
4	"	"	"	8-10
5	"	E wall.	"	8-10
6	"	Cross wall Sub 1	29/6	11-10
7	R-13	general	30/6	16-25
8	D-H 200	Room 1 sub 2N	"	22-25
9	"	Room 1 " 3E	"	16-25
10	"	Rooms 6-7 " 7NW	"	22-25
11	"	Room 6-7 v. drain	"	22-25
12	"	general	"	16-25

Roll 4

- 9 = Wall 1.
 10 = Cutting for S wall of Hill bldg.
 11 = SW corner of dig
 12 = Sullivan window on.

E wall described.

- S wall = cutting - ~~is~~ in center } Limestone portion probably went
 large limestone at E end. } only as far as cutting showing N.S.)
 rubble at W end. } here
- W wall = rubble - does not bond with S wall but contig.
 goes to S under S wall of trench.



VELOX

2111

DH 23/24-N

Mosaic Pavement, Room 8

VELOX

VELOX

VELOX

VELOX



2112

DH 23/2A - N

Room 12

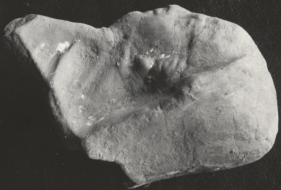


Emblema, mosaic pavement 2.

In situ

2110

DN 23/24-N



VELOX

VELOX

PH 23-24 N. Under mosaic
+
Pavement no 1.

2233

VELOX

VELOX

VELOX

VELOX



2113

DH 23/24-X

X

Ave N of Well 3 cont

X



2238

DH 23/24-N Excavation under
mosaics 1 & 2



2099

Mosaic Attachment 2.

DH 23/24-N

9/5/35



VELOX

VELOX

VELOX

DH 23/24-N

2100

General view, S end
of examination

905-35

VELOX

VELOX

VELOX

VELOX

VELOX

VELOX



2.97

DH 23/24-N Room 10, 11 → S

10/5/35



Mosaic pavement 1.
2098

DH 23/24-N

Mosaic

9/5/35

VELOX

VELOX

VELOX

VELOX

VELOX

VELOX



VELOX

VELOX

2096
VELOX

10/5/35
DH 23/24--N WIDE 3 Courtyard → E

VELOX

VELOX

VELOX



VELOX

VELOX

VELOX

2075

DH 23/24 N

10/5/35

General View of excavation

VELOX

VELOX

VELOX

VELOX

1-4-35

Architectural fragments 4636 A126

2-4-35 Syrian 4637 A127

Lampshere, Roman
coarse ware

Hellenistic handle

Local red

Marble revestment

Coarse ware pitcher 4654 P815

4655 P816

4656 P817

unknown out. in collection.

Late Hellenistic lamp shreds.

Hellenistic black

" moulded.

Syrian.

Lead plate

Pergamum dish - 4647 P812

Local ware

Late A.

Hellenistic black painted

Early Roman.

Hellenistic handle

Lamp shreds. early Hell.

Roman.

clear glass

Architectural fragments

opus sectile

red stucco.

Monday, 29 April, 1935

The excavation of this building, partly uncovered last year, was continued. Began by clearing surface soil around Well 3. & E wall of the structure.

Tuesday, 30 April, 1935

Continued excavating surface soil to N + E
of Well 3. Uncovered wall to N which
may be N. wall of building

Shards along wall N. of Well 3.

Phidian handle. 4894 P895

Hell. lamp. 4896 L 333 (W.I) 12/136

Pergamene

Roman green glazed base,

Coarse jar

Hell. ware

Fragments of coarse ware pottery
jar decorated with meanders,
4895. P896

Wednesday, 1 May, 1935

Excavating surface to N. of Well 3 courtyard.
N. wall uncovered yesterday turns corner
to S toward Well 3 & may mark a corner of
building.

Uncovered geometric mosaic pavement
on higher level at E end of N. wall & E. of
this another geometric mosaic pavement,
and also one of Oceanus & fish.

Drypu NE Well 3.

Green glazed

Pergamine

Hell. ware

Local red

Part of Bronze Dracelch 4942 514.

Thursday, 2 May, 1935

Continued excavation in area to E of Well 3 courtyard. Dug & cleared section of main E. wall of building & continued excavating to E. of it to explore contiguous building.

In excavation along main E wall found two well preserved Hill silver coins:

1. Alexander II, 128-123 B.C.
2. Antiochus VII, 138-129 B.C.

Surface E of Main East wall of villa.

micaceous coarse ware

Fragment of Greek silver medallion

Hill lamp. No. 4909 & 4907

Roman II or III c. lamp. studs.

Pygmaea

Stamp base

4th c. black hemispherical

Lipystro

middle part.

Late B. A

Roman green glaze

Hill. painted ware

Ampulla handles, 4909-P904

4910 P905

4911 P906

4912 P907

4913 P908

4914 P909.

Ba.

Lamp stud to A.D.

Fish plates

Loose ware.

Pyg.

Hill incised

Lipystro

Ampulla handles

4923 P914

4924 P915

4925 P916

B3.

amphora handle 4923-P914
Well. Bl. & red glaze
Fish plates
Local red glazed.

Test pit W. dolphin mosaic surface
Lote A 5048-P967
Coarse pot. 5049 P968.

clear glass

Roman lamps III c. 4905 L334
4906 L335
4907 L336

weight

small vase- 4904 P903
Lays, late R. 4927 L342
III L.A.R. Imp. 4930 L343

Friday, 3 May, 1935

Continued digging down along main
East wall + East of this area.

Ca. - 2. E. Main E Wall -

Red brown glaze

Pergamene base

See A + B

Fig. Ancestral base c.w. C.O.Y. 4940 P925

Roman stamped base 4939 P924

(signature)

Fish plate frags.

Roman green glaze

Hellenistic IIIc heavy, with fine bl. gl.

Samp studs - w. H.T. C.I - IIc AD

" " Roman IIc AD.

Level 2 Main E Wall, E. of Wall.

Coarse

Pergamene

Hellenistic relief.

Spindles

Fish plates

Hell IIc B.C. Bl. heavy ware

Roman green glaze

Clear glass

Samp studs - IIIc AD.

w. H.T. C.I - IIc BC

Iron weight frag.

Hell. black glazed bowl

" Handles.

Semi-coarse.

Fate A

Hell. Samp studs. II BC - I AD.

Vertical ribbed ware

Along Main E Wall, level of
wall E side

Amphora handles. 4931 P918
4932 P919

Large studs. CE I W. II BC.

Moulded bowl rim

Fish plate. 4968 P940

Hellenistic large bowls.

black inside red ext.

4966 P938

4967 P939

Small kylixes

Pury

Wh. Bl. glaze II BC

gray ware

Brown glaze

Mudrim green glaze

Mudrim ornament 4926 A147

Surface E of East Main Wall.

Micaceous jar. 5047 P966

Hellenistic brown glaze

Local red

Unquantaria frags.

coarse ware

fish plates

Saturday, 4 May, 1935

Extended excavations to modern
drainage wall at E. limit of Suliman
Hindie's land & uncovered late
rubble wall running parallel to it.

Excav. along late rubble wall, NE
corner of Area.

clear glass
Pergamene
Coarse ware unglazed.
grey stucco
Ambraccian coarse ware
Late A
Lamp handles. ^{type} Hell. of Roman.

Along late rubble wall at E end
of trench.

Red stucco
1 lamp frag. v.
Pergamene
Local red
glass
Ambraccian fragment (moulding?)
1 late A.

See plan E. end of Area

Pergamene ware
Fluted base
Late straight rims
thick bases
Thin cups.
Fish plates
Roman moulded ware, very low relief.

Roman clear glass.

1 stamped Tert base 4980 #949.

2 Hellenistic type lamp sherds.

black glaze - brick ware.

Monday, 6 May, 1935

Continued excavations on surface soil of rooms defined by terrace wall on E, old excavations on S, Well 3 court on W, and Fish mosaic on N. Reached bedrock along S. wall of trench.

Surface along E wall of trench.

S1.

Local red & black
Pergamene
Lamp sherds 1-11 AD.
Roman green glaze.

B2.

Pergamene stamped base 1972 P944
Hellenistic black ware
Local red
Fish plates
Roman green glaze
Black and red vertical
ribbed with scratched border.
Hellenistic cup handles
Lamp studs. Hellen. type. Cl. uncertain.
"1?"

Pergamene
Hellenistic black with lead border.

Near Lull 3 court

Loom weight

Pergamene

Amphora handle 4948 - P926

Falx handle

Coin

Hellenistic black glaze

Fish plate

Surface S.E. corner of Area

Pergamene

Lamp club R.

Brown glaze

Date A.

Micaceous coarse

To bed rock along S. Wall of Trench

Unquantaria frags.

Hellenistic black glaze,

poor quality.

2 handles. 4946 P927

4947 P928

Fish plates, broad and narrow rims.

Soil red

thin pergamene

Hellenistic red-black ware

loom weight.

Soil of walls - along S wall of Trench.

Black glaze vase 4965 P937.

Above bed rock Room SE fish mosaic.

3 spindle whorls

W. H. T. L. 4960 - L348

... I 4961 L349 - H.C.R.C.

Stamped Amphora handle -

4962 P934 4964 P936.

4963 P935

Room NW Fish mosaic. to bed rock
late? lamp handle (A)
Black of a thick wall painted
decoration

Local bl. tools

Fish plates thick and thin rims
Well lamp fragment. IIIc + Wooye II^o
Top of a large jar
Blas glass

Tuesday, 7 May, 1935.

Continued excavation in above mentioned area & extended excavation to W. of courtyard of Well 3.

Sheds.

From surface W. of well 3

Pergamene, stamped, thick, thin.

Lamps W.H.T.C. III 4975 L350

From Aqueduct N.W. corner Well 3 court

Ampulla handle 4971. P943

Decorated ware

Pergamene

Total red and black.

1.50 m above bedrock N. of bath tub.

Miniature Hellenistic Pot. 4959 P983

Lamps Class I 4958 L347.

Hellenistic Lamps. Bl. Type 4957 L346

SE corner below level of bath tub.

Fish plates

Pergamene

Hellenistic red

Roman green glaze

IIc. Hellenistic stamped ware

Brown glaze

Ampulla handle - 4956 P932

Above bed rock. S. wall Trend.

Pergamene

Lamps. W. H. T. Cl. II & III 3c. AD. 4974 L351

Roman Lamp stud. prot III

Late A.

Local ware

Roman green glaze
mail

Musical? coarse ware, mixed

Along bottom E. wall of Trend,
W. side below level of pipes.

Fish plates

Pergamene

Black & Red Hellenistic ware

Local ware

Twisted handles

unguentaria

Cup-like handle 4969. P941

Lamp fragments. W. H. T. Cl. I

Late to p. uncertain

Hellenistic moulded ware

Basin / vase 4970. P942

red ware

West of fish mosaic

Pergamene

Hellenistic black

Fish plates, broad & narrow rims.

Good black glaze.

unguentaria

Lamp studs. uncertain class.

Cleaning area, W. courtyard. Cell 8.

21000 weights

Black Hill glaze. Late IIIc

unguentaria frags

Vertical ribbed. red & bl. II-1

Local ware fish plates

Small bowls

Perg.

Wednesday, 8 May, 1935.

Completed & cleaned excavation of area
except under mosaic pavements.

Studs

from Aqueduct NE Wall 3.
II c. Roman lamp stud
Yellow pyrite probably horse,
with lead? 4983. T 214
Coarse ware
Puz
Lith red
Lamp frags. Glass
Gloss
Thin core
Figurine fragment.

28-24N.

Isome whitish
Pergamene. bowl. 4992 P 956
decorated rim 4994 P 958
Fish plates broad rim
Black fig. very poorly conserved.
Lamp rimmed Pergamene ware
Fragments of moulded bowl with
leaf and floral decoration.
4993 P 957.
4 Roman lamp frags.

S. of wall 3.

Lamp studs. Hill. III c. B.C.

1 bronze H.T. cl II

Very thin Pergamene 4981 P 950

Pergamene

Fish plates

Lith red.

top of pitcher, black scratched ware 4982 P 951

11 May 1935

Surface over mosaic = 1

inscription fragments	5052	I 153
	5053	I 154
	5054	I 155

late B. ware

" C "

Pergamene

Hellenistic Black glaze

Green glaze

Bronze - Iron frags.

Says I C

30 May, 1935. Under wall N. of Room 10.
Bronze spoon 5202 - U 335.

under fish mosaic.

5224 7218

under mosaic 1.

Coarse ware

Fish bowl

Local red + black, Hellenistic

Pergamene

Green glaze.

Black moulded ware

Unquertaria fragment.

Stone pedestal frag.

under mosaic No. 2

Pergamene ware

Local Hellenistic red + black ware

Black moulded ware

ston wheel

Red ribbed ware

Unquertaria frags.

2 Hellenistic Lamps

5229 2402

5230 2403

under late drain.

- Room 10.

Coarse ware

Fish bowls

Local red + black ware

Unquertaria frags.

Lamp. Hell. Type Cl. III - 5228 2401

same:

Local

Local red + black

Decorated Perg.

Red vertical ribbed ware 5231 P1028

Handle of a pt, moulded 5247 P1037

3 lamps I + II + BC

5244 L406

5245 L407

5246 L408

same

Coarse ware

Unquantified frags.

Pergamine

Local Hellmuth Red + Black

Black painted ware

Fish bowl

Amphora handle - 5238 P1032

Lamp I + BC 5239 L405

10. 6. 52⁺ Sup. mosaic 1.

Coarse ware

Local blue red & black

Fish bowls

Painted shra. 5282

P1031

Ring stones; part of fibula 5298- 4551

Button 5300 - 5120

Room 10 under late drain to bedrock

Coarse ware

Local red & black Melleusitic

Melleusitic black

Pyganum

Amphora handles 5234. P1029

Unguentaria jars

Fish bowl.

1 Fine red shra.

Sub mosaic # 2

Coarse ware

" " shallow bowl with rim drain

1 blue red (local)

Unguentaria jars

Much Pyganum

Fish bowls

Lamp 10. BC. 5236 L 404

1 blue bowl 5248 P1038

Vertical ribbed base 5264 P1045

Roman green glaze

Coarse ware cooking plate 5265 P1046

2 Amphora handles 5255 P1040

5256 P1041

Under mosaic 1-2

Coarse ware

Local red & black Hellenistic

Unguentaria

Pergamum

Fish bone

Painted ware 5237 P1031

Black unglazed ribbed ware

4 Amphora handles 5240 P1033

5241 P1034

5242 P1035

5243 P1036

Red unglazed ribbed ware

Lamps 16 BC

Local A. P1038 5263 P1044

From dump: 26 June, 1935.

2 amphora handles

5429 - P1095

5430 - P1096

Frag. Hell. lamp. II century

5431 - L438

Notes on construction of walls of newly excavated area:

So-called courtyard of Well 3.

Sketch to show area - of architect's plan for



accurate drawing. The area around Well 3 is paved with white mosaics in which are panels of birds & geometric patterns as described last year.

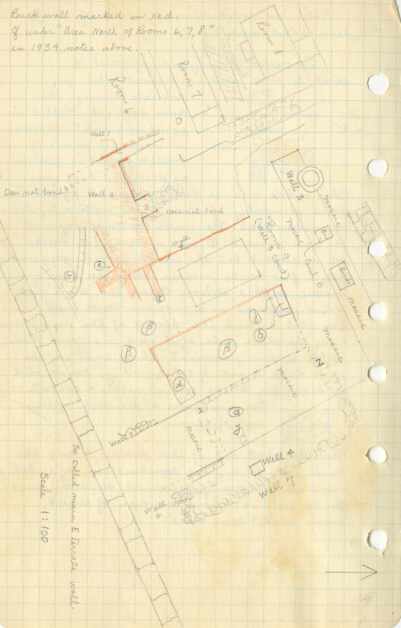
This whole area is badly confused by the total plundering of some of the walls & by later reconstructions. The walls contemporary with the area marked \odot were of triangular bricks set in cement but the width is not preserved - only a few bricks remain along the edge of the mosaic in this section. Across the short end of this pavement is a narrow brick wall like that around the niches of the nymphaeum & on the other side of it is a narrow plain white mosaic pavement which ends in the wide brick E wall of the building, constructed of triangular bricks set in rubble & concrete:



For dimensions & direction of this wall cf. plan.

Over the short end of this mosaic & over the brick wall is a later construction of rubble & concrete too poorly preserved to reconstruct. The concrete is a hard mixture of cement, coarse sand & some ashes.

Brick wall marked in red.
of under "Area North of Rooms 6, 7, 8"
in 1934 notes above.



Notes on brick well marked in red on opposite page at points enclosed in circle:

- (a) no foundation set off
- (b) pipe lines sketched; size & type like sub 1 & 2 excavated last year.
- (c) this well triangular & reused frags. brick bedded on matrix of mosaic.
- (d) limestone block on earlier wall & contempor. with brick wall.

Notes on other walls & pavements in area.

(a) mosaic pavement of hall which turns corner & forms court around Well 3. Walls 5 & 6 which are contemporary with it are built of limestone rubble & limestone reused blocks set dry. Drain along E side of hall probably put in later since mosaic does not cover it. At x, y, z later constructions have been placed over the mosaic pavement: x is a wall of rubble & hard concrete bonding & contemporary with rubble & concrete mass in area (B) which is also over original Wall 5 overlapping it & mosaic N of wall x; y = 3 bricks complete & 1 partly ripped out (.45 x .32 x .09) apparently related to Well 4 serving as support for pipe or drain & never had more construction on top of it; z apparently continuation of Wall 7 which is of limestone rubble & dirt & of a later period built as a later make shift adaptation of the building.

Well 4 is a dry well leading down to underground aqueducts as Wells 1-2-3.

- ③ = an area of rubble, brick frags. & concrete which may have been the foundation of a flight of steps to the upper terrace or to the roof or 2 storey of this building. A confusing mass suggesting this form of stair with landing:



The mass overlaps SE corner of mosaic pavement of Room 9 & whole E end of brick wall.

- ④ = large white tesserae pavement under mosaic pavement of Room 9. - .125 below.
- ⑤ = another large white tesserae pavement under above at - .22 m. below mosaic pavement of Room 9

Walls North of Well 3 courtyard.

The main wall here is a heavy wall of large limestone rubble bedded on the bedrock which has earlier quarry cuttings. This makes a diagonal join with an earlier wall forming the W. wall of the Well 3 courtyard:



Near this join are three lengths of a TC pipe line running thru the heavy rubble wall. TC pipes: l: .33
w. .19 ; inner dia at
large end: .145 ; inner dia. at flange: .105
l. of flange .03 ; distance between ridges of
rbs: .017

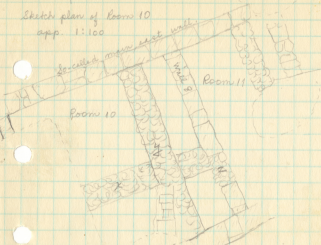
The W. wall of Well 3 court (early limestone & not later brick) makes right angle turn to W. & runs into diagonal heavy rubble wall again but forms no bond & seems to have been ripped out here when heavy rubble wall was constructed. Parallel with this right angle wall of Well 3 court is fragmentary narrow wall of small roughly hewn limestone blocks which goes with coarse white mosaic pavement of sub Room 8. At right angles to its south end is fragment of field stone & dirt wall like those under mosaic pavements found in area last year. This turns to S. & continues direction of small limestone wall ^{to S} which has been ripped out here.

Walls & pavements SE of "Villa" area.

The so-called main east wall of the villa is an earlier wall reused but not reconstructed. It is built of roughly quadrated blocks of local sandstone of varying sizes - set dry & without clamps. Limestone very soft & original dressing probably lost. 3 bottom courses original; rest rebuilt.

Wall 8 bonds with this wall & both are laid on bed rock which has earlier quarry cuttings. In wall 8 is a door which has later been filled with rubble. The door jambs are preserved to a height of 1.28 m or 3 courses. No trace of any floor level in Rooms 10 or 11 on either side of Wall 8 - hence only indication of floor level is from level of stoop in door. The fill of rubble in the door was made from Room 11 since it projects roughly into Room 10 but is even on the Room 11 face. Wall 8 does not bond with the S wall of Rooms 10 & 11 which is contemporary with & parallel to so-called main east wall.

↑
Sketch plan of Room 10
app. 1:100



limestone
stoop.

→ door of which only W.
jamb excavated
○ - door on higher level.

Wall x = rubble & dirt wall later than limestone walls & laid against wall 8.

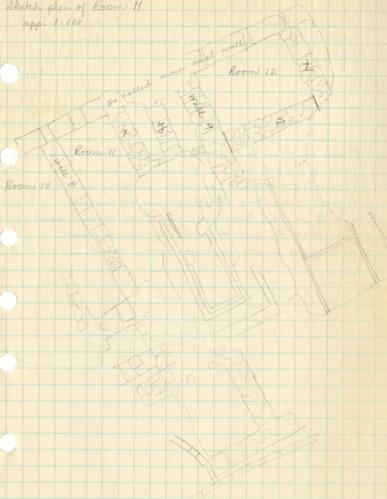
Wall y = rubble & dirt foundation with foundation set off of .05 - .10 m. after which wall is of crudely laid reused limestone blocks & rubble set dry. Later than x & steps over it.

Z = rubble fill in door of wall 8.

Near intersection of x & y is late open drain with triangular brick sides & brick bottom covered with limestone slab top.

Sketch plan of Room 11
app. 1:100

↑ N



Wall 7 = rubble + dirt going down to bedrock

Wall 8 = limestone block binders + rubble going down to bedrock.

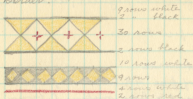
Wall 9 = east wall of Room 11 in original quadrated limestone building. Three courses of original wall are left + founded on

bedrock. Above these three courses is a later reconstruction of reused limestone blocks & rubble.

Room 12 has bed rock at higher level than room 11. East wall & S wall of Room not excavated. Wall S is later wall of rubble & reused limestone blocks down to bedrock. Wall T is late Hellenistic wall of rubble with limestone binders & founded on bedrock. None of the walls in the room bond.

Mosaic pavement 1.

Border:



95 per sq. dec.

Emblema:

Thalassa in center of oblong panel with fish. Represented with head & bust; almost completely destroyed. Flesh muddy; sudder yellow; hair black. Fish green & grey; l., red & grey; grey, l. grey.

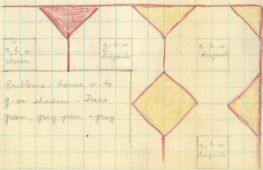
Walls around room plundered.

Mosaic pavement ² as photographed:

Originally contained small, interesting emblema now destroyed.

Color notes:

Border



2.16 ft from ground
 Stratification under Mosaic pavement 2. down
 to bed rock; stratification regular; under W. end.

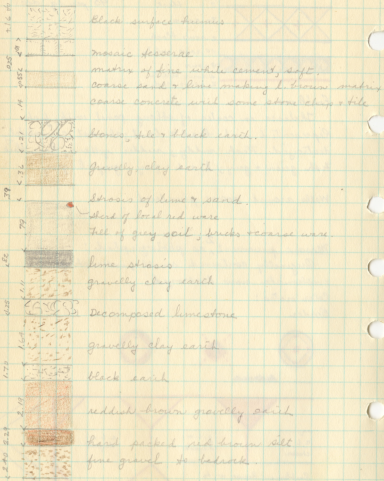




Photo of stratification
drawn on opposite
page.

Construction of wall 10

Rubble with limestone blocks running through it as binders, set dry. Against it at a higher habitation level than original construction is pavement of large untrimmed limestone tesserae in cement matrix & coated with thin layer of red stucco. To E. & N. of this pavement is wall, which goes with pavement, constructed of rubble, reused limestone blocks set in mud. Directly E. of E. wall of this coarse mosaic pavement is a wall of same construction as wall 10 & founded, like wall 10, on bed rock - undoubtedly walls of same building in which small room with large mosaic pavement has been placed at later date.

At 2 On top of wall 10 in a later reconstruction possibly contemporary with mosaics 1 & 2, is a single block of limestone forming a small latrine. The hole is .18 m. in diameter & goes down .33 m. to a t-c tile which drained into the pipe line system along the S. face of the wall.



Latrine along wall 10.

At 7 along N. face of wall at W. end of excavated area is bath tub of brick sides plastered over and a bottom of large (0.2 sq) white limestone tesserae. In corner as indicated on traced plan is outlet pipe of TC .085 m. in diameter. at W. end is round water distributor which probably was connected with a feed pipe.

Floor around it of reused brick fragments set in ash mortar.

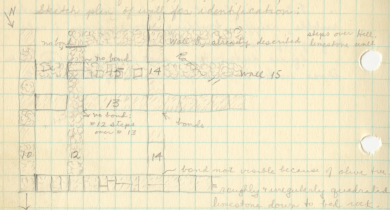
Construction of Wall II.

Large wall built of field stones, limestone rubble, reused building stones, frags. of cols. & frags. of mosaic all set in mud.

• Square distributor & pipe line from (a) like those under mosaic pavement of Rooms 1 & 2.

Construction of walls under mosaic pavements 1+2

Sketch plan of wall for identification:



Wall no 10: there are no bonds with any of the walls at right angles to this wall; all of the right angle walls are built against wall 10.

Wall no 12: rubble, dry, 9' in foundation trench. up to level of conerstone marked above after which reused limestone & larger rubble set dry or in mud. Wall¹⁵ is laid against 12 on both sides.

Wall no 13: Hellenistic limestone wall constructed of quadrated limestone blocks set dry without clamps. Forms N wall of Room 11. & continues E to wall 10. It bonds with wall 14 which is of same construction. Between 12 & 14 is a door in this wall which has been filled with rubble at a later date & over the wall is a later wall of rubble & dirt construction.

Wall 14: Hellenistic limestone wall like no. 13.

Wall 15: Reused limestone blocks irregularly quadrated on rubble down to bedrock.