

Excavation in 24-b

Chamber 1

East wall, along mountain side, constructed of rubble set in mortar with a wide set off at top of constructed sarcophagus on which limestone slats of sarcophagus cover were placed. Above this is another foundation set off which probably marks the floor level of room since wall is plastered to this point.

South wall bonds with East wall & is plastered down to bottom of chamber. At west end this wall is set into an arched opening of an earlier structure. Limestone re-entrant with Medusa head between swags found above this wall - position not sure since it was found by plundering villager digging for stones. South wall constructed of rubble & mortar.

West wall also rubble & mortar set against & does not bond with N. face of arched opening. But bonds with S wall where these meet.

North wall does not bond with either E or W wall & seems later. Field stones set in mortar with much charcoal.

One tomb built into E end along E wall. Reused limestone & also reused limestone slats for cover. The bottom, filled with debris.

Chamber filled with dirt & construction debris down to foundation of early wall of concrete faced with triangular bricks.

Small circular altar in debris on top of which II cent. lamp stand & near which amulet.

In debris = 4 terracotta flues & other frags. of flues. Keep possibility of early structure being Bath in mind.

Chamber II

East wall destroyed

W wall is of earlier bldg. Rubble + reused material = 4 quadrated limestone + some bricks. Horizontal rebuilding level. Old voussoirs. Occasionally thick mortar joint. Of + passé coup de fer + so reprise may be medieval.

N + S walls of limestone rubble built against W. wall + does not bond.

3

Sherds from 14L - Siaret 9 June, Tomb 1.

Basket 3:

Medieval lamp

II A.D. lamp

Late B + C ware

Frag. early Byz. lamp: 3594-L200

In altar top was lamp of late Hell.

type of III cent. A.D.

Sherds from 24L - Siaret 9 June, Tomb 2

Basket 4:

Late A + C

II cent. lamp

local red + Perg.

Roman moulded

Increased rim: 3595-P353

Part of local red dish: 3596-P354

Face of figurine: 3597-T124

Sherds from 24L - Siaret - 11 June, Tomb 2.

Basket 4:

Coarse ware

Local

Roman moulded ware

Frag. of small tile altar: 3601-T125

Coarse sherd with letters BE in relief:

3602-P357.

24 L
Room 2

3610-A 31

8.6.34

Pilaster cap facing, Corinthian.
Marble; mended from three fragments. Back smooth.
H. 0.258; W. at top 0.342; th. 0.044
Above in center, beardless mask; on each side below half acanthus leaf with single egg between at bottom. In center, palmette, whose stone splits to rise and form volute resting on top of each leaf.

=====

24 L
Room 2

3611-I 58

9.6.34

Fragmentary late grave relief of usual type with deaped figure reclining on couch. Bottom edge and upper left corner broken. Top flattened instead of panted. Grayish marble with some line deposit. Back smooth. L. 0.21; h. pres. 0.16; th. 0.034
Letters: carelessly cut about 0.01 high under and below couch.

=====

24 L
Room 2

3612-I 59 a-d

9.6.34

Fine fragments of late grave relief of usual type with deaped figure reclining on couch. Grayish marble. Pediment-shaped top. Back smooth. th. 0.018.

a. Two fragments of figure and couch mended. max. dimen. 0.103

b. Head of figure and part of top; joins a; max. dimen. 0.096

c. Upper left corner; joins b. max. dimen. 0.11
d. Lower left corner; no join; max. dimen. 0.105
Inscription: careless letters 0.015-10 h. on d.

=====

24 L	3613-I 60	9.6.34
Room 2	S 130	

Fragment of late grave relief of bluish marble. Broken on top and side; back smooth. H. 0.10; W. 0.072
Inscription: in careless letters ca. 0.014 high in two lines under bottom of chair.
Relief: of seated woman on larger piece which does not join; see under S 130.

=====

24 L	3594-L 200	9.6.34
Room 1.		

Fragment of early Byzantine lamp. Left rear half of upper mould preserved. Hard, thin, gritty red clay.
L. pres. 0.07
Handle: horn, upper part missing.
Side: sloping, decorated with raised parallel hole.
Rim: practically none; large center filling hole separated from side by three high ridges; space between outer two wider than inner. i.e. around the filling hole is a narrow circular channel, which (in a complete lamp of this type) would flow into the wide trough on the nozzle.

24 L 3581-P 346 8.6.34
Room 2; surface debris.

Ampulla with Christ and evangelist in relief. Whole. Hard, pure dark buff clay. Matt red to purplish glaze partly preserved. H. 0.067; W. 0.0485; th. 0.023

Obverse: Bearded Christ clad in colobium standing facing; his right hand holds book in front of chest; cover ornamented with X; left hand helps support side below. Folds of colobium come to print at bottom; there on each side, double circle. Feet turned out. On each side, a long elliptic leaf on thick stem. Probably stylized palm trees.

Reverse: Bearded apostle seated right, writing; book held on left arm; chair has back; in front to side. Ionic column with spiral flutes.

=====

24 L 3595-P 353 9.6.34
Room 2

Part of rim with reused decoration; from high-necked closed shape. Soft, pure buff clay. Gray at core. Remains of poor red glaze inside, and out.

H. 0.053

Decoration; incised before glazing.

=====

24 L 3596-P 354 9.6.34
Room 2

Part of local dish with full profile preserved. Hard. pure light buff clay; worn light red matt glaze. Outside scored by wheel

marks, inside also but finer.
H. 0.027 ; d. rim restored; ca. 0.15

Shape: flat bottomed shallow dish W. slightly
incurved rim.

=====

24 L
Room 2

3602-P 357

11.6.34

Fragment of stamped coarse pottery.
Roundish convex, broken at back. Coarse
hard red to brown clay.
Max. dimen. 0.04
Stamp: in low relief above surface; letters
O.02 and less R.

=====

24 L 3609-S 129
Rebuilt into late wall
(W) of Tomb 1

Large slab of limestone ornamented
in low relief. Soft, yellowish stone; whole
Bottom edge and back rough picked. Ends
levelled back. Back half of top edge cut
down for 0.05 to form ledge; in it at left
corner is cutting 0.08 L and 0.04 dump; right
corner broken so no cutting invisible there.
L. 1.97 ; h. 0.97 ; th. 0.13
Relief: Within plain borders 0.10 W. at sides
and top and 0.14 at bottom. Low 0.015 and
less. In center at top, beardless mask; from
it suspended wreath to each corner, ends of
wreaths tied by pointed ribbons, long ends
of which hang down to bottom border, short ends
extend at right angles partway over loop of
wreaths. In center of each wreath a rosette
from which hangs a bunch of grapes. In space
above center of wreaths, a large rosette.
Background rough picked.

=====

24 L

3613-S 130
I 60

9.6.34

Fragment of late grave relief mended from three pieces; broken below and on side. Bluish marble. Back smooth. Pediment shaped top. In hole in left edge, part of rim clamp. H. ca. 0.24 ; W. 0.14; th. 0.035
Relief: Draped, hooded figure, probably female, seated side in chair; head facing; her right arm down left hand drawing hood together under chin.
Inscription: and piece of bottom which does not join; see under I 60.

=====

24 L
Room 2

3597-T 124

9.6.34

Lower part of child's face from figurine. Broken above ridge of nose. Pure soft buff clay. Trace of whitish slip.
Max. dimen. 0.036

=====

24 L
Room 2

3601-T 125

11.6.34

Fragment of small clay altar. Preserved from foot to middle of one side. Hard, pure yellow clay. Trace of white slip outside.

H; 0.063 .
Shape: and decoration; was pointed type.

=====

























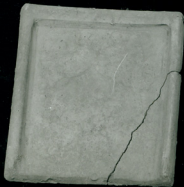


Room 5,
Lower tile
grave, from
end.



Room 5, Lower
tile grave, from
side.

Grave C,
From floor
of grave



Room 5, Upper
tile grave,
From floor.

Top.







